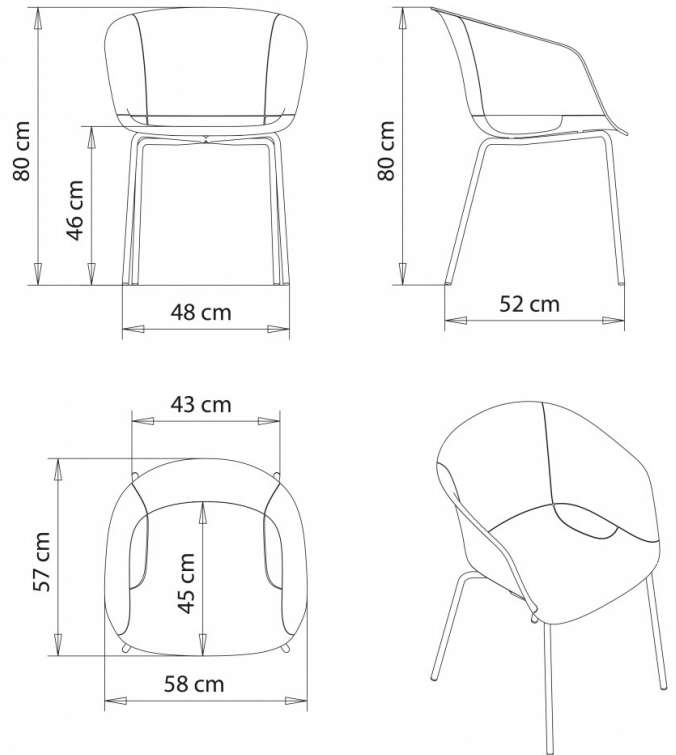


Dunk 1191

DUNK COLLECTION:

Dunk 1190, Dunk 1191, Dunk 1192, Dunk 1193, Dunk 1194,



POLTRONCINA DESIGN:

Poltroncina, scocca in versione chiusa, telaio 4 gambe in tubo acciaio.

PESO

5,6 Kg

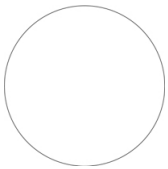
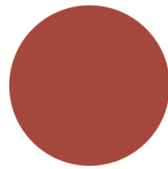
IMBALLO

0,32 m³

PEZZI PER SCATOLA

1

FINITURE SEDUTE

PP POLIPROPILENE NCS S0502-B
Bianco trafficoNCS S9000-N
Nero intensoNCS S4040-R
Marsala

NOTE

La scocca di colore marsala, presente in versione chiusa e aperta, è realizzata con polipropilene riciclato r-PP (recycled PP) proveniente dalla selezione di imballaggi e prodotti alla fine del loro ciclo di vita.

TELAJ

AC ACCIAIO



NCS s0502-b VR Bianco
traffico



VR Peltro



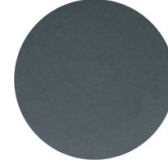
NCS S0500-N VR
bianco puro



NCS S4000-N VR
Alluminio brillante



CR Cromato



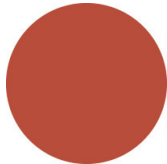
NCS S7502-B VR
Grigio antracite



NCS S9000-N VR Nero
intenso



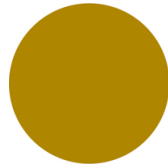
NCS S9000-N VR Nero
intenso opaco



NCS S3060-Y80R
Rosso Corallo



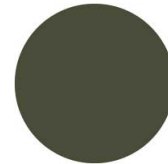
VR Bronzo metallico
bucciato



NCS S3060-Y
Giallo curry



NCS S4050-B40G
Blu acqua



NCS S7020-G50Y
Verde oliva



NCS S8005-Y20R
Marrone



NCS S6030-B
Blu capri

DESTINAZIONI D'USO

Coffee & Restaurants, Hotels, Educational, Entertainment, Travel, Office and Waiting Areas, Retail, Health Care, Outdoor,