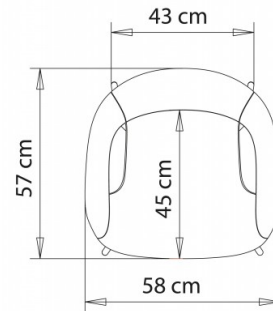
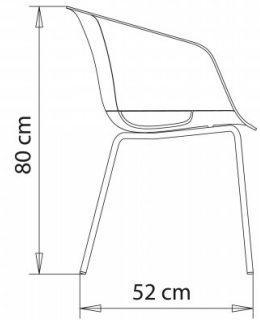
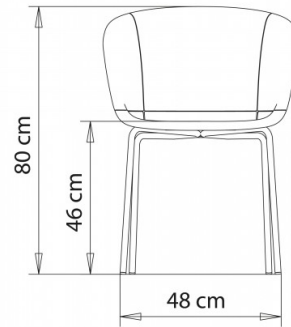


Dunk 1190

DUNK COLLECTION:

Dunk 1190, Dunk 1191, Dunk 1192, Dunk 1193, Dunk 1194,



POLTRONCINA DESIGN:

Poltroncina, scocca in versione aperta, telaio 4 gambe in tubo acciaio.

PESO

5,4 Kg

IMBALLO

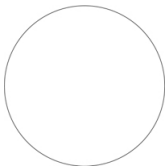
0,40 m³

PEZZI PER SCATOLA

4

FINITURE SEDUTE

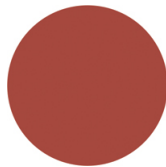
PP POLIPROPILENE 



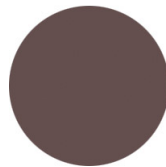
NCS S0502-B
Bianco traffico



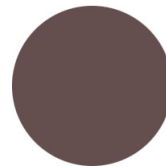
NCS S9000-N
Nero intenso



NCS S4040-R
Marsala



NCS S6502-R
Argilla



NCS S6502-R
Argilla



NCS S7020-G50Y
Verde oliva



NOTE

La scocca di colore marsala, presente in versione chiusa e aperta, è realizzata con polipropilene riciclato r-PP (recycled PP) proveniente dalla selezione di imballaggi e prodotti alla fine del loro ciclo di vita.

TELAJ

AC ACCIAIO



NCS s0502-b VR Bianco
traffico
☀



VR Peltro
☀



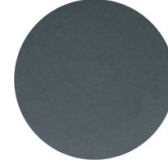
NCS S0500-N VR
bianco puro
☀



NCS S4000-N VR
Alluminio brillante
☀



CR Cromato



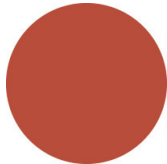
NCS S7502-B VR
Grigio antracite
☀



NCS S9000-N VR Nero
intenso
☀



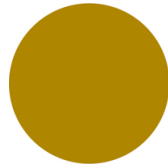
NCS S9000-N VR Nero
intenso opaco
☀



NCS S3060-Y80R
Rosso Corallo
☀



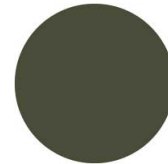
VR Bronzo metallico
bucciato
☀



NCS S3060-Y
Giallo curry
☀



NCS S4050-B40G
Blu acqua
☀



NCS S7020-G50Y
Verde oliva
☀



NCS S8005-Y20R
Marrone
☀



NCS S6030-B
Blu capri
☀

DESTINAZIONI D'USO

Coffee & Restaurants, Hotels, Educational, Entertainment, Travel, Office and Waiting Areas, Retail, Health Care, Outdoor,