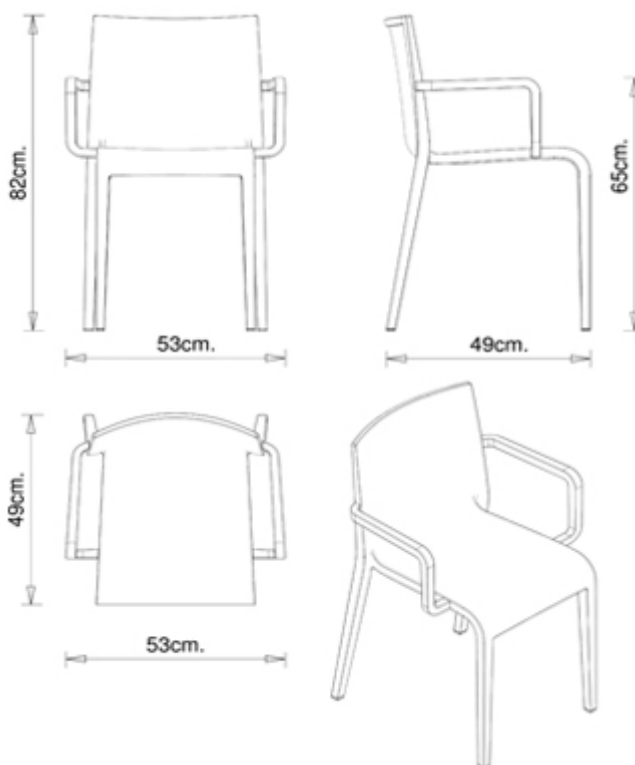


Marc Sadler

Nassau 534

NASSAU COLLECTION:

Nassau 533, Nassau 533N, Nassau 533M, Nassau 534, Nassau 534N, Nassau 534M, Nassau 537B, Nassau 537, Trolley 536,



SEDIA DESIGN:

Sedia monoblocco con braccioli in polipropilene, stampata a iniezione con tecnologia air moulding.

* da gennaio 2020 disponibile imballo da 4 pezzi

IMPILABILE

8

PESO

4,8 Kg

IMBALLO

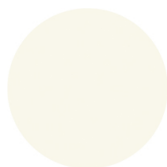
0,39 m³

PEZZI PER SCATOLA

5 - 4*

FINITURE SEDUTE

PP POLIPROPILENE



NCS S0500-N
bianco puro



NCS S7020-G50Y
Verde oliva



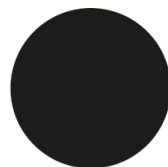
NCS S4005-Y50R
Tortora



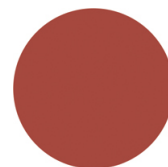
NCS S7502-B
Grigio antracite



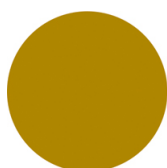
NCS S4005-B20G
Grigio vaio



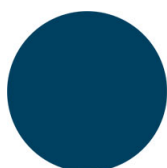
NCS S9000-N
Nero intenso



NCS S4040-R
Marsala



NCS S3060-Y
Giallo curry



NCS S6030-B
Blu capri



NOTE

Lea scocca di colore **Verde oliva** (NCS S7020-G50Y), è realizzata in **polipropilene riciclato al 100%** da scarto industriale.

DESTINAZIONI D'USO

Coffee & Restaurants, Retail, Outdoor,